

The background of the cover is a complex, multi-layered architectural wireframe. It features a central circular structure with a dense network of lines, surrounded by various geometric forms and structural elements. The overall color palette is a range of greys, from light to dark, with a vertical bar on the left side containing segments of purple, yellow, and red. The text is overlaid on this background.

# THE PHAIDON ATLAS

OF CONTEMPORARY  
WORLD  
ARCHITECTURE

PHAIDON

# Contents

Introduction to The Atlas 8

## World Data 10

0.1	Global Population Density and Building Distribution Map	10
0.2	Population and Urbanization Trends by Region	12
0.3	Population and Urbanization Trends by Country	12
0.4	Economy, Environmental Sustainability, Human Development Indicators and Architecture	14

## 1 Oceania Projects 001-084 16

1.1	Australia West	001-004	18
	Northern Territory	001-002	18
	Western Australia	003-004	21
1.2	Australia East	005-059	22
	Queensland	005-012	22
	New South Wales and Australian Capital Territory	013-036	27
	Victoria, South Australia and Tasmania	037-059	46
1.3	New Zealand and Southeast Pacific	060-064	65
	New Zealand	060-063	65
	New Caledonia	064-064	68

## 2 Asia Projects 065-248 70

2.1	Southwest Asia	065-078	72
	Lebanon	065-070	72
	Israel	071-073	77
	Jordan	074-075	80
	Iran	076-076	81
	Saudi Arabia	077-078	81
2.2	Central and South Asia	079-096	83
	Pakistan	079-079	83
	Jammu and Kashmir	080-080	84
	India	081-092	84
	Sri Lanka	093-094	93
	Nepal	095-095	94
	Bangladesh	096-096	95
2.3	China	097-130	96
	China	097-128	96
	Taiwan	129-130	117
2.4	South Korea	131-151	118
	South Korea	131-151	119
2.5	Japan North	152-168	135
	Japan North	152-168	135
2.6	Japan South	169-224	147
	Japan South	169-224	147
2.7	Southeast Asia	225-248	188
	Thailand	225-226	189
	Cambodia	227-227	190
	Philippines	228-228	191
	Malaysia	229-234	192
	Singapore	235-248	197

## 3 Europe Projects 249-836 206

3.1	Greenland and Iceland	249-254	208
	Greenland	249-250	208
	Iceland	251-254	210
3.2	Norway, Sweden, Finland and Denmark	255-321	212
	Norway	255-268	212
	Sweden	269-281	223
	Finland	282-297	232
	Denmark	298-321	244
3.3	United Kingdom North	322-331	260
	Scotland	322-330	261
	England North	331-331	267
3.4	United Kingdom South and Republic of Ireland	332-408	268
	England and Wales	332-388	268
	Northern Ireland	389-389	310
	Republic of Ireland	390-408	310
3.5	Netherlands	409-468	321
	Netherlands	409-468	321
3.6	Belgium and Luxembourg	469-482	359
	Belgium	478-480	360
	Luxembourg	481-482	367
3.7	France	483-514	368
	France	483-514	369
3.8	Spain North	515-546	391
	Spain North	515-546	392
3.9	Spain South	547-580	416
	Spain South	547-580	416

3.10 Portugal 581-590 438

Portugal 581-590 438

3.11 Germany North 591-647 446

Germany North 591-647 446

3.12 Germany South 648-668 489

Germany South 648-668 489

3.13 Switzerland and Liechtenstein 669-702 506

Switzerland 669-700 506

Liechtenstein 701-702 528

3.14 Austria 703-744 529

Austria 703-744 530

3.15 Italy North 745-760 561

Italy North 745-760 561

3.16 Italy South 761-765 572

Italy South 761-765 573

3.17 Estonia and Lithuania 766-771 576

Estonia 766-769 577

Lithuania 770-771 579

3.18 The Russian Federation 772-777 580

The Russian Federation 772-777 580

3.19 Poland and Czech Republic 778-798 584

Poland 778-782 584

Czech Republic 783-798 589

3.20 Slovakia, Hungary and Romania 799-809 599

Slovakia 799-802 600

Hungary 803-806 602

Romania 807-809 605

3.21 Slovenia, Croatia and Yugoslavia 810-820 606

Slovenia 810-817 607

Croatia 818-819 612

Yugoslavia 820-820 613

3.22 Greece, Turkey and Cyprus 821-836 613

Greece 821-832 614

Turkey 833-835 623

Cyprus 836-836 625

## 4 Africa Projects 837-860 626

4.1 Africa North 837-840 626

Ethiopia 837-837 626

Egypt 838-838 629

Senegal 839-839 630

Guinea 840-840 631

4.2 Africa South 841-860 631

Tanzania 841-841 632

Namibia 842-843 633

Botswana 844-844 634

Mozambique 845-845 634

Republic of South Africa 846-860 635

## 5 North America Projects 861-1007 644

5.1 Canada 861-871 646

Canada 861-871 646

5.2 USA West 872-917 654

USA West 872-917 654

5.3 USA East 918-984 691

USA East 918-984 691

5.4 Mexico and Costa Rica 985-1007 737

Mexico 985-1006 738

Costa Rica 1007-1007 753

## 6 South America Projects 1008-1052 754

6.1 South America (North) 1008-1025 756

Colombia 1008-1015 756

Ecuador 1016-1017 761

Peru 1018-1022 763

Bolivia 1023-1023 767

Brazil North 1024-1025 768

6.2 South America (South) 1026-1052 769

Brazil South 1026-1032 769

Argentina 1033-1042 775

Chile 1043-1052 781

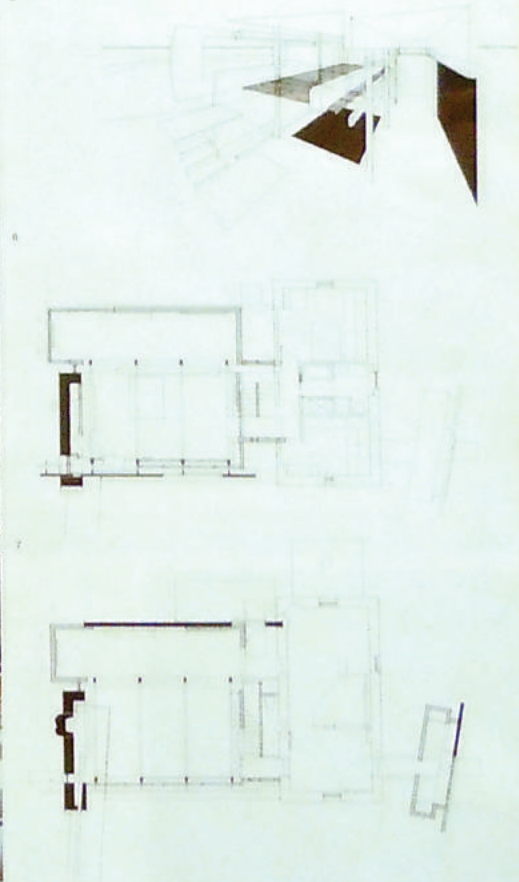
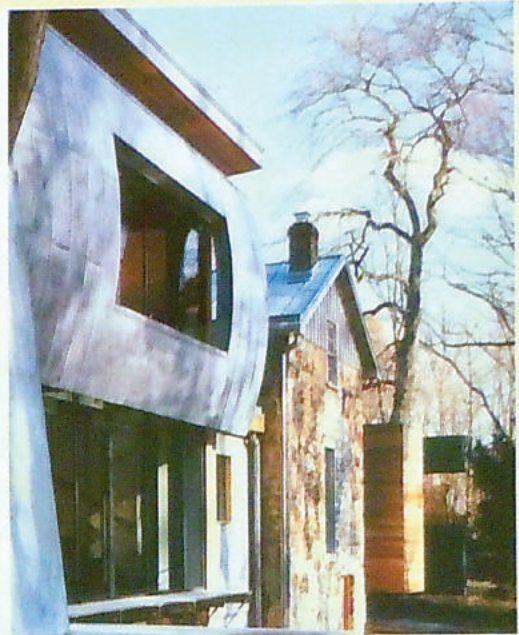
## Indexes 790

Building Types 790

Index of Buildings 794

Index of Architects 808

Index of Places 809



048 This eighteenth-century farmhouse (belonging to a cobble of modern art has been substantially renovated and extended to suit the client's needs. A series of shifting masses slowly reveals elements of the interior and exterior as one moves through the house, offering glimpses and then full views of the air collection. In the new design, the house is entered through a pinching steel door into a small foyer. Inside, each element maintains its own identity: a small, cedar-

clad kitchen; an abstract sculpture in its own right; the stone farmhouse accommodating a gallery on the ground floor and a bedroom and closet above; and finally the larger addition with its bulging, lead-coated copper facade. This contains a large living area and a gallery space that rises to a height of 5.5 metres (18 feet) on the ground floor, designed specifically for a large *Acidman* water painting. On the first floor, the left-like master bedroom looks out over the Rock pond

and the forest. The front facade forms a virtually solid composition, with just a small bank of windows. In contrast, the rear elevation is generously glazed with views over the pond. Respecting the clarity of the stone farmhouse, we use a contrasting palette of materials: Corten steel, lead-coated copper, concrete and cedar planks.

1. The bold addition to the traditional stone farmhouse with the kitchen pavilion on the right and gallery and living areas on the left
2. The master bedroom's bulging facade
3. The main entrance and the timber volume that contains the kitchen
4. The living area's extensive glazing allows views out to the pond
5. A staircase divides the old and new components of the house
6. Conceptual sketch

7. Second-floor plan  
8. First-floor plan

Client: Wilford  
Area: 27,000 sq ft  
Cost: Confidential